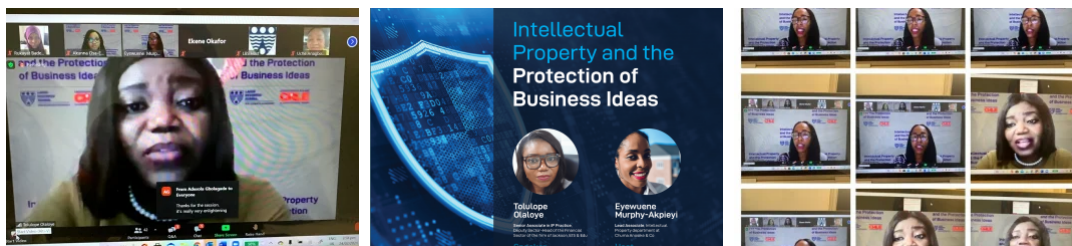


## CKCRLE Digest – Q1,2021

Greetings to all our esteemed readers and welcome to the first edition of our digest for the year. Thank you for your continued commitment to the Centre over the years. We remain resolute in our quest for new and innovative research collaborations whilst working on our on-going research activities. Details of our activities in the first quarter can be found below.

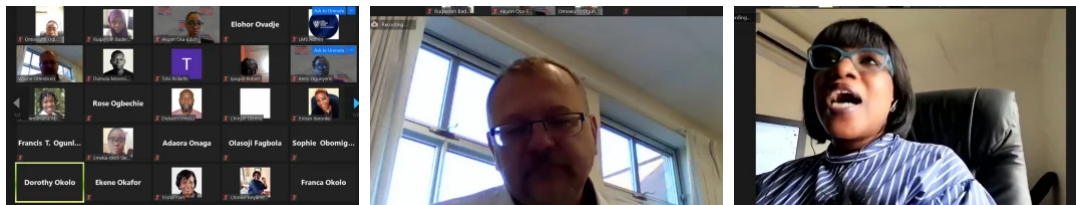
### News and Events



### Webinar- Intellectual Property and the Protection of Business Ideas

Christopher Kolade Centre for Research in Leadership and Ethics on 24 February 2021, hosted a webinar on intellectual property. We had as our speaker, Tolulope Olaloye, Senior Associate in the Intellectual Property (IP) Practice, and the Deputy Sector-Head of the Financial Sector of the firm of Jackson, Etti & Edu. She gave a concise presentation on the various aspects of IP and infringements that can occur as well as remedy for such infringements. Eyewuene Murphy-Akpieyi, Lead Associate in the Intellectual Property department at Chuma Anosike & Co, served as moderator and also gave her two cents on the practise of IP in Nigeria. The event was quite interactive and had participants from diverse backgrounds.

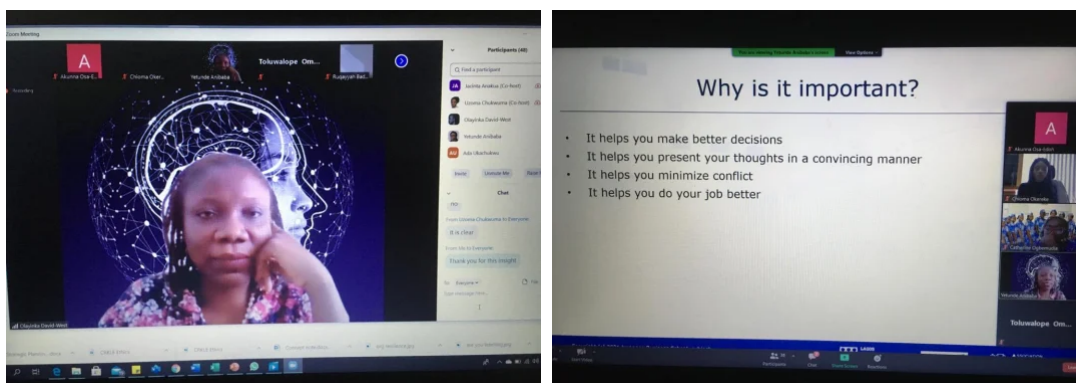
Visit our [website](#) to view a recording of the event.



## CKCRLE/HMN Event- Dynamic Self Understanding: Pursuing Personal Excellence

On March 30, 2021, the Centre hosted a virtual Humanistic Management Network Business Meeting for the Nigerian Chapter. It was a 'get to know ourselves' meeting with a chance for self reflection to aid rediscovery of purpose. To see us through the self rediscovery phase, Wayne Ottenbreit, a counsellor and the CEO of Vivians Academy, led the discourse and reflection. It was a well attended event with the various workgroups giving a plan of action for the year.

Visit our [website](#) to view a recording of the event.



## Lagos Business School's Women's Day Celebration

To mark the international women's day on March 8, 2021, LBS put together a virtual event to celebrate women. We had our female faculty give various presentations. One of our faculty and affiliate to Christopher Kolade Centre for Research in Leadership and Ethics, Dr Yetunde Anibaba, gave a presentation on strategic thinking. She encouraged women to have a strategic mindset to oversight the term 'emotional' usually used to refer to women passionate in the course of their duty. The over all theme of the presentations was a desire to have deserving women acknowledged. There was a fun 'know ourselves' game quiz as well and the event was rounded up with a music and dance session.



## Research Team Hangout

CKCRLE together with the research team of Lagos Business School, had a fun hangout session at Lufasi Park, Ibeju -Lekki. This was a bonding exercise as well as a celebration of the outgoing Research Manager, Omotayo Muritala, who is moving on from Lagos Business School.

We wish him well in all future endeavors!

---

## Publication

---

### The role of leadership in diversity by Amaka Anozie

In the workplace, we have had enough of sterile lament from our leadership about not finding able diverse people to fit in organisations. As the Bible says, he who seeks, finds. Leaders must look for in order to find. As a leader, know that your organisation will be richer for having able diverse people working within the group. This is not just empty talk but something backed by research and the many success stories.

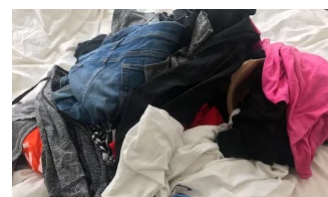


Published in Business Day Newspaper on Monday , January 25 , 2021.

[Read More](#)

### Ethical fashion: Need for regulations in the second-hand clothing industry by Ruqayyah Baderinwa

In Africa, Second-hand clothing has been both a commodity of necessity and a commodity of choice. Two seemingly opposing concepts but true, nonetheless. Africans for decades have purchased second-hand clothing for its economic value, hedonistic value and uniqueness/individuality. Economic value because of its affordability in comparison to local textiles and new garments. Hedonistic value because of the thrill of finding a great bargain for





what might have otherwise cost a fortune. There is also the desire to purchase items that are considered one of a kind and rare to find. These factors have influenced trading in SHC for so many centuries. Till date, purchase of SHC in African countries is hardly due to ethical and environmental concerns.

Published in Business Day Newspaper on Wednesday February 24 , 2021.

[Read More](#)

## **Strategic planning and healthcare services adapted by Akunna Osa-Edoh**



The health care industry is one of the most sacrosanct social and economic sectors of any nation's development agenda due to the nature of services provided. In Africa, the process of managing health care service delivery to offer solutions to her health care challenges appears not to have yielded expected outcomes. One of the observed reasons is a lack of strategic planning in the health care industry. Whether public or private, all establishments must make plans for the marketing of services/products to the general public. The complexities of globalisation and the fast pace at which systems are expected to react to societal demands require that institutions do not just plan but plan strategically.

Published in Business Day Newspaper on Wednesday March 17 , 2021.

[Read More](#)

---

## **Event**

---

### **Leadership Gold by Humanistic Management Network**

Pure Leadership Gold will be unearthed as Bob Chapman, CEO of industrial group Barry-Wehmler, shares his unique leadership experience with Ernst von Kimakowitz, Co-Founder and Director of the Humanistic Management Network, facilitated by Jane Adshead-Grant of the Chapman & Co. Leadership Institute. Join to see the good things that happen if business seeks to respect dignity, integrates ethics in business decisions and actively engages with stakeholders. Date: April 22, 2021. Register [here](#).

### **BEN-Africa-The Business Ethics Network of Africa**

The conference is an international platform for stakeholders from the private sector, public sector, non-profit organisations and academia to come together

and reflect on, discuss and respond to the opportunities and challenges related to conducting inclusive and principled business in Africa.

BEN-Africa's stated mission is to strengthen the commitment and competence of Africans to do business with moral integrity.

As we convene in Swakopmund, Namibia, for our 20th annual conference, we believe it is an opportune time to revisit, critically evaluate and revitalise the foundational concepts which guide such a mission. What does it mean to be a stakeholder in today's economy? Can stakeholder theory still deliver on its promise for inclusive and sustainable business practice, particularly in an African context? What does value and wealth creation mean in today's society facing multiple and acute challenges, such as climate change, global pandemics and accelerating technological change which seem to exacerbate existing inequalities? Are the values and principles that inform and guide business in the current milieu fit for purpose? What does values-driven leadership look like from the African point of view? How do we reinvigorate ethics in African business to restore its transformative and development impetus?

Date: 4-5 November 2021. Register [here](#)

---

## Research in Progress

Faculty affiliated to CKCRLE are conducting research in the following topics/themes:

- *Moral Identity and Corrupt Practices*
  - *Sustainable Human Ecologies: Solidarity, Inclusion, and the Free Market*
  - *Organisational & Research Culture of African Universities (ORCA)*
  - *Ethical Consumption*
  - *Self-Development*
  - *Governance and Economic Development*
  - *True stories of Participative Leadership and Ethics in Corporations and Society (Tentative book title)*
  - *Accountable Governance and Ethical Practices in Africa's Public Sector*
- 

## Call for Papers

---

### Inclusive and Principled Business: Ethical Values; African Stakeholders

Scholars and other experts from around the world are invited to submit industry and academic papers and posters that address the theme of 'Inclusive and Principled Business: Ethical Values; African Stakeholders.'

However, any papers dealing with business or organisational ethics in Africa will be considered.

The conference language is English. The conference will take a hybrid format – both virtual and face-to-face presentations will be conducted. Submission of academic papers may be in abstract for presentation at the conference only, or as a full paper for presentation and publication in either the Conference Proceedings or in the African Journal of Business Ethics.

Deadline for Abstract Submissions: August 1, 2021. For more information, click [here](#)

## Economic Justice and the Common Good

Depaul University, Institute for Business and Professional Ethics, is looking for academics, practitioners and young scholars that have an interest in and commitment to the study and discussion of business and professional ethics. A one page proposal, including an abstract is required. Proposals which address important issues in the field of business and professional ethics and reflect timely, cutting edge insight are actively sought. This year, the school is particularly interested in topics related to questions around economic justice and the common good.

Abstract deadline: June 15, 2021

Decision Date: July 15, 2021

Deadline for full paper (to be considered for Primeaux Awards): August 16, 2021

[Submit to: IVBEC2021@gmail.com](mailto:IVBEC2021@gmail.com)

Questions or concerns?

Email Summer Brown

[sbrown15@depaul.edu](mailto:sbrown15@depaul.edu)

For more information, click [here](#)

## Corporate Social Responsibility And Covid-19 Global Crisis: Managerial And Financial Perspectives In Developed And Emerging Countries

The effects related on Covid-19 can be more important than any other global crisis in living history and its impacts on financial and managerial practices could be significant. Accordingly, the need for research insights in order to develop and enhance stakeholder theory, institutional theory and resource-based perspectives (RBP) in the context of international crises is of great importance. Moreover, the extraordinary financial transactions (e.g., mergers, acquisitions, consolidations, de-mergers) should be revisited and tied with CSR

principles, which in turn, the impact of CSR on company performance (on different levels) should also be re-evaluated.

Submissions for the special issue will be open between 1 July 2021 and 31 December 2021. For more information, click [here](#)

---

## Sponsorship and Collaboration

---

We look forward to collaborating with individuals and organisations who share common interests with us. To sponsor or collaborate with us on research or any of our events, please contact the CKCRLE Centre Manager, Akunna Osa-Edoh [aosa-edoh@lbs.edu.ng](mailto:aosa-edoh@lbs.edu.ng) or [crle@lbs.edu.ng](mailto:crle@lbs.edu.ng)

---

### CKCRLE Affiliated Faculty

The following faculty members are affiliated with CKCRLE:

Eugene Ohu, Frank Ojadi, Franklin Ngwu, Henrietta Onwuegbuzie, Ifedapo Adeleye, Juan Elegido, Martha Onyeajuwa, Molly Ogunyemi, Ngozi Okpara, Rose Ogbechie, Uchora Udoji, Vivian Ogochukwu Nwaocha, Nike Moradeyo, Yetunde Anibaba, Ogechi Adeola and Monye Ajuwa

### CRLE Volunteers

CKCRLE currently have the following active volunteers:

Stephen Ukenna, Igbaroola Ayoola, Adaeze Ocho, Princess Anifowoshe, Kaetochukwu Udeh, Bisola Abu, Adenike Afolabi, Atinuke Adigun, Ada Oba, Azeezat Ajibola, Chidi Anosike, Chinwe Onwuka, Enitan Ibironke, Kayode Odebiyi, Onyinye Okwuowulu, Onyinyechi Akagha, Segun Sotola, Uche Anagboso, Azeezat Ajibola, Chioma Okonkwo, Nengi Bob-Manuel Harry, Chinonye Nwosu, Tobiloba Fadesere, Chisom Osuigwe, Ekene Okafor, Amaka Anozie, Eyewuene Murphy-Akpieyi and Salamat Balogun.

Thank you all for your contributions to CRLE.

---

Share real life stories of exemplary leadership and ethical conduct with us.  
Send a mail to [crle@lbs.edu.ng](mailto:crle@lbs.edu.ng) or [aosa-edoh@lbs.edu.ng](mailto:aosa-edoh@lbs.edu.ng)

---

We hope you enjoyed our CKCRLE Digest. Look out for our next edition in June 2021 . Here's to a successful 2nd Quarter of 2021!

---

# Join us on our social media platforms



## **Lagos Business School**

Christopher Kolade Centre for Research in Leadership and Ethics

Lagos Business School

Km 22 Lekki-Epe Expressway, Ajah

Lagos 100211

Nigeria

mailer lite